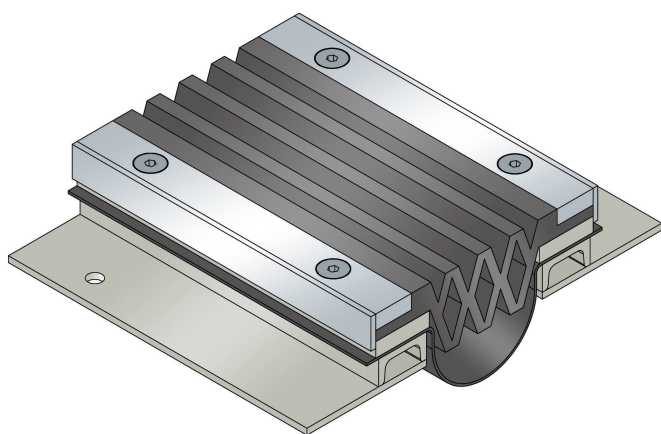




VA.8.196/..

- high load-bearing capacity
- replaceable flexible insert



FEATURES

watertight, resistant to heavy loads, trafficable by fork-lift trucks, expansion insert can be replaced at a possible damage without damaging the adjacent pavement, abrasion, weather and temperature resistant (-40°C bis +120°C), resistant to salt and waste-water (alcalics, microbes, bacteria), agreements may also be made for other sealing sections

APPLICATIONS

outdoor, multi-storey and underground park decks, ramp accesses, pedestrian bridges

MATERIAL

hot-dip galvanised steel substructure and high-grade steel V2A surface, synthetic rubber flexible insert (EPDM), sealing insert made from Wolfin IB

COVERING TYPES

coating, concrete, screed, industrial covering, natural and stone slabs

TRAFFICABILITY

passenger car, trucks, fork-lifts

FORMED PARTS

upstand, end piece, corner piece, T piece, cross piece, transition floor to wall

NOTES

The sealing and flexible inserts are connected using M10 bolts positioned at intervals of 150 mm.

Between profile and coating must be a 5 mm wide grouting, so that a lateral water infiltration is excluded.

At profile height 45 mm and 59 mm, a minimum joint width of 80 mm is required.

Our engineers and technicians can be of assistance during installation on request.

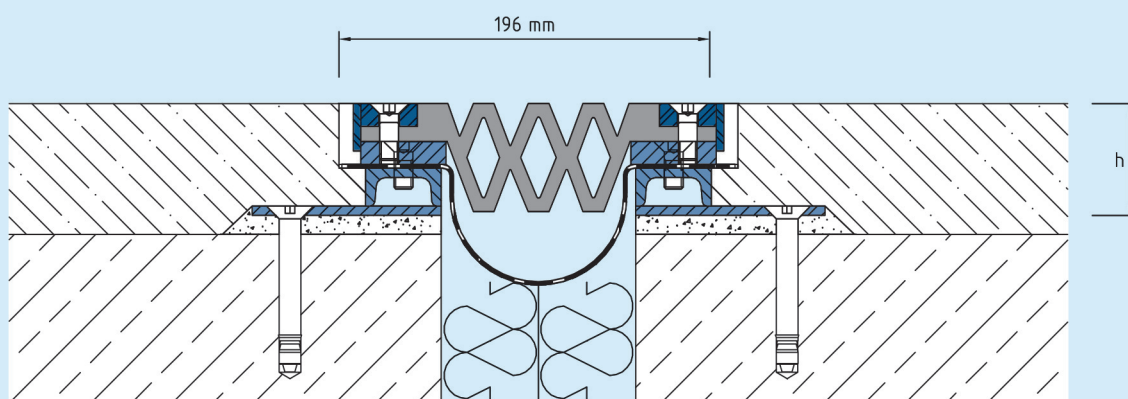
Technical data

Movement horizontal:	100 mm (-40/+60 mm)
Movement vertical:	50 mm (±25 mm)
Visible width:	196 mm
Maximal joint width:	100 mm
Load rating trucks:	300 kN (DIN 1072)
Load rating forklifts:	50 kN (DIN 1055-3)
Supply length:	3 mtr
Color of flexible insert:	black

Designs

Article No.	Profile height (h)	Recess(WxD)
VA.8.196/45	45 mm	380 x 55 mm
VA.8.196/59	59 mm	380 x 69 mm
VA.8.196/74	74 mm	380 x 84 mm
VA.8.196/89	89 mm	380 x 99 mm
VA.8.196/104	104 mm	380 x 114 mm
VA.8.196/119	119 mm	380 x 129 mm
VA.8.196/150	150 mm	380 x 160 mm

Special heights on request.



Subject to technical change without notice.

VA.8.196