



## VA.8.130/0

- **high load-bearing capacity**
- **installation in site-mixed concrete**

### FEATURES

watertight, resistant to heavy loads, trafficable by fork-lift trucks, abrasion, weather and temperature resistant (-40°C bis +120°C), resistant to salt and waste-water (alcalics, microbes, bacteria), agreements may also be made for other sealing sections

### APPLICATIONS

outdoor, multi-storey and underground park decks, ramp accesses, pedestrian bridges, all industrial applications

### MATERIAL

hot-dip galvanised steel substructure and high-grade steel V2A surface, synthetic rubber flexible insert (EPDM), sealing insert made from Wolfin IB

### COVERING TYPES

coating, concrete, industrial covering

### TRAFFICABILITY

passenger car, trucks, fork-lifts

### FORMED PARTS

upstand, end piece, corner piece, T piece, cross piece, transition floor to wall

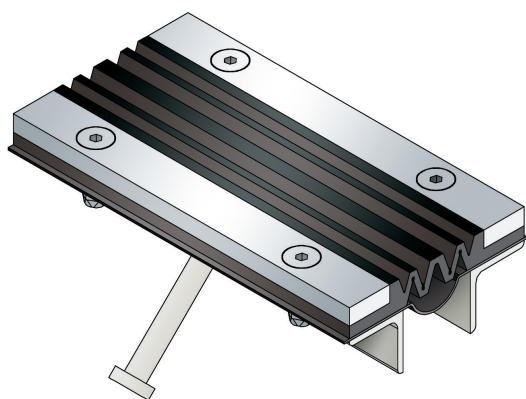
### NOTES

The sealing and flexible inserts are connected using M10 bolts positioned at intervals of 150 mm.

Grouting profile VP40/20 is already installed at the factory

The sealing insert which is looking on the sides of the profile out, has to be connected properly with the sealing system. This is very important to get a watertight result of the joint-profile.

Our engineers and technicians can be of assistance during installation on request.

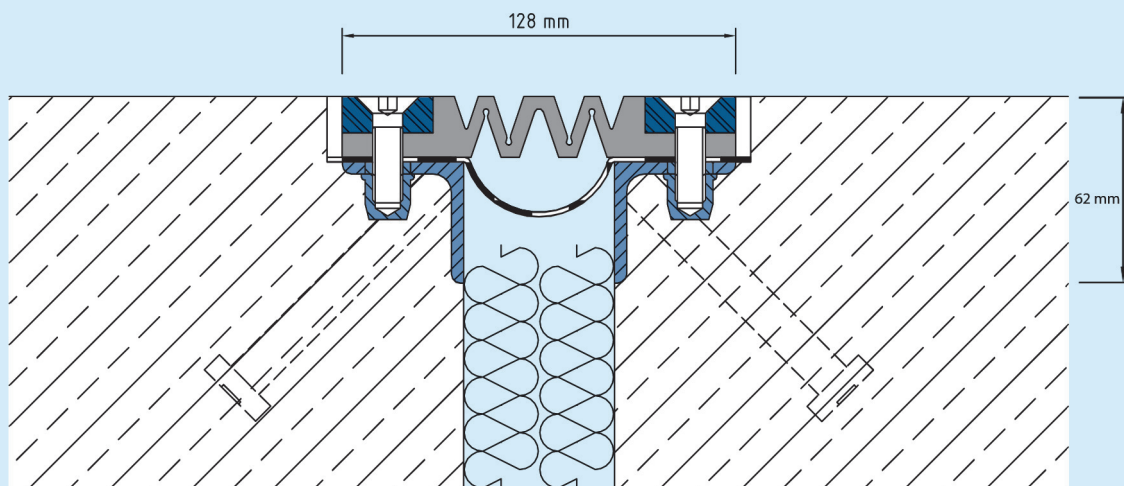


### Technical data

Movement horizontal:	60 mm (±30 mm)
Movement vertical:	30 mm (±15 mm)
Visible width:	128 mm
Maximal joint width:	48 mm
Load rating:	wheel load 5000 kg up to Ø 150 mm, B = 100 mm
Load rating trucks:	600 kN (DIN 1072)
Load rating forklifts:	150 kN (DIN 1055-3)
Supply length:	3 mtr
Color of flexible insert:	black

### Designs

Article No.	Profile height (h)
VA.8.130/0	62 mm



VA.8.130

Subject to technical change without notice.