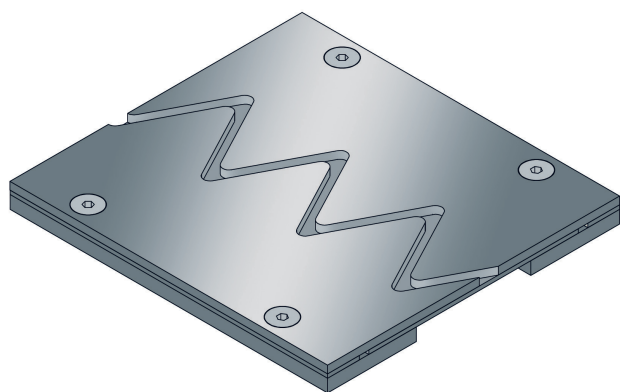




ST.6.230/19

- for heavy loads
- low profile height
- vibration-free trafficability



FEATURES

resistant to heavy loads, trafficable by fork-lift trucks, the special profile design means that no bearing leg slips under the floor covering (this prevents thin industrial floor coverings from tearing)

APPLICATIONS

all industrial applications, areas with use of driverless vehicular systems, shopping centres, railway stations, airports, exhibition halls

MATERIAL

black steel

COVERING TYPES

coating, concrete, screed, industrial covering, magnesia flooring, natural and stone slabs

TRAFFICABILITY

industrial trucks (lifting trucks, fork-lifts etc.), passenger car, trucks

FORMED PARTS

corner piece, T piece, cross piece, transition floor to wall

NOTES

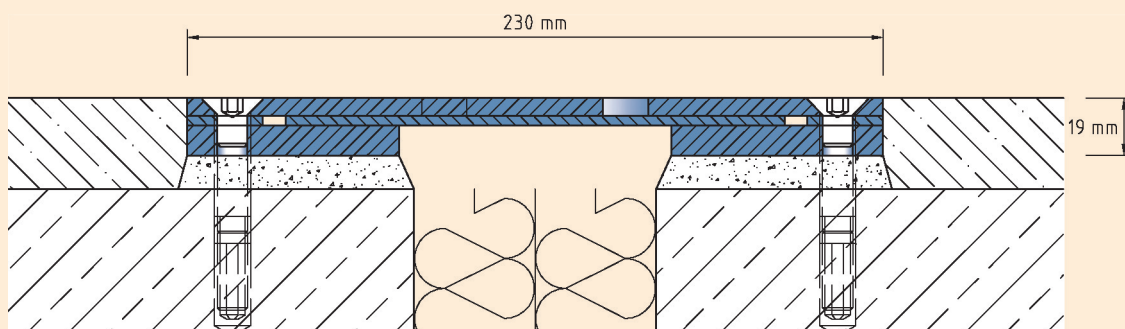
We recommend that the customer applies grout between profile and covering so as to avoid typical hairline cracks.

Technical data

Movement horizontal:	35 mm (-15/+20 mm)
Visible width:	230 mm
Maximal joint width:	80 mm
Load rating:	wheel load 3500 kg up to Ø 150 mm, B = 100 mm
Load rating trucks:	600 kN (DIN 1072)
Load rating forklifts:	120 kN (DIN 1055-3)
Supply length:	3 mtr

Designs

Article No.	Profile height (h)	Recess(WxD)
ST.6.230/19	19 mm	370 x 29 mm



ST.6.230

Subject to technical change without notice.